



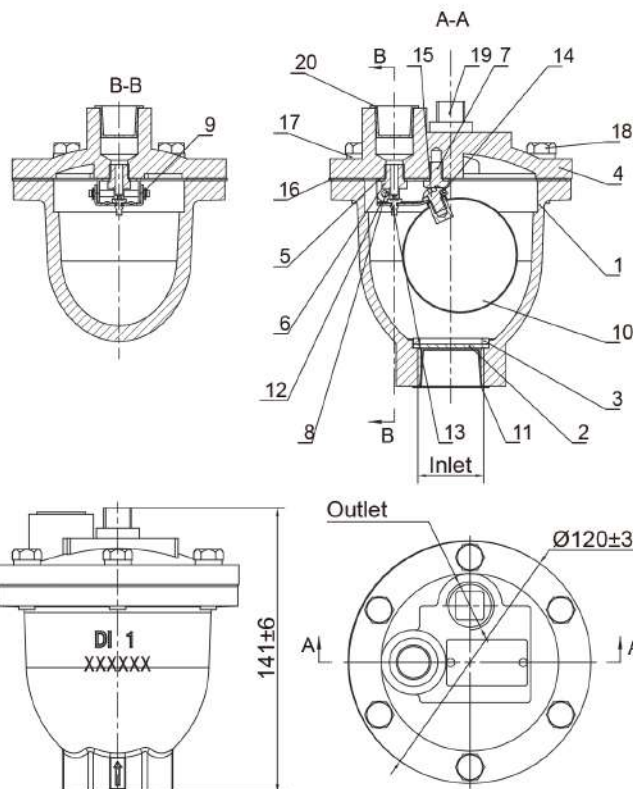
Technical Features

- Designed, manufactured: accordance with UL 2573/FM1344.
- Test Standard:UL 2573/FM1344.
- Temperature: 0 to 100°C
- Normal size: 1"
- Normal Pressure:175PSI
- Test Pressure: Leakage Test 263PSI,Strength Test 350PSI
- Use in wet pipe sprinkler systems, standpipe system or with horizontal split case pumps.
- The inlets of the valves are 1-11 1/2NPT, the outlets of the valves are 1/2-14NPT.



Valve Material List

Size	Description of Parts	Materials
1	Valve Body	Ductile Iron
2	Filter Screen	SS316
3	Gasket Ring	Carbon Steel
4	Bonnet	Ductile Iron
5	Yoke	SS316
6	Valve Seat	SS316
7	Bolt	SS316
8	Valve Shaft	SS316
9	E Type Retainer Ring	SS304
10	Ball	SS316
11	Big Protective Cover	Plastic
12	Lever	SS316
13	Poppet	EPDM
14	Spring Washer	SS316
15	Hex Socket Head Bolt	SS304
16	Asbestos-free Gasket	CN-705
17	Spring Washer	Carbon Steel
18	Bolt	Carbon Steel
19	Plug	Ductile Iron
20	Small Protective Cover	Plastic



Connection for Installation

The inlet connections shall be made using the external threads of tapered pipe thread 1-11 1/2NPT conforming to the standard ASME B 1.20.1-2013, and the outlet connections shall be made using the external threads of tapered pipe thread 1/2-14NPT conforming to the standard ASME B 1.20.1-2013.

The inlet connections shall be made using the external threads of tapered pipe thread R21 conform to the standard ISO 7-1-1994, and the outlet connections shall be made using the external threads of tapered pipe thread R2 1/2 conforming to the standard ISO 7-1-1994.